

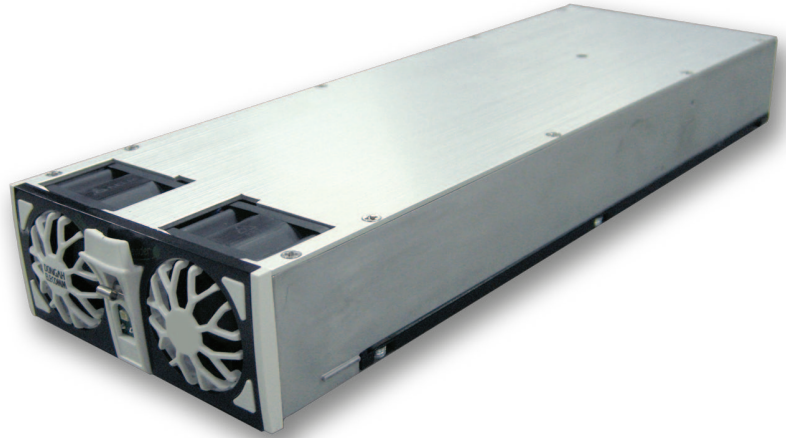


RoHS 2 Compliant

REV: 051816

PRODUCT FEATURES:

- 1RU Height, 2000 Watt Rectifier Module
- High Efficiency Operation (up to 92%)
- Universal AC Input
- Active PFC for EN61000-3-2 Class D Compliance
- Active Current-Sharing (within $\leq 2.5A$ module-to-module; 10% ~ 100% load)
- Hot-Swappable ($< 0.5\%$ Vout deviation)
- Full Featured Status and Alarms
- Front Panel LED Indicator
- RS-485 Serial Interface (via rear connector)
- International Safety Approvals
- RoHS 2 Compliant



INPUT SPECIFICATIONS:

VOLTAGE	85VAC to 264VAC (see Derating Curve for $< 180VAC$)
FREQUENCY	47-63Hz
INRUSH CURRENT	$\leq 15A$ max; $\leq 12.5A$ @ 240VAC (Cold Start)
OPERATING CURRENT	$\leq 11.3A$ @ 240VAC; 11.85A (max, continuous)
PROTECTION	Dual 15A Fuses / 250 V Rated
LEAKAGE	$\leq 3.5mA$ @ 264VACin
EFFICIENCY	92% typical
HARMONICS	EN61000-3-2 Class D Compliant (≥ 0.98 PF)

OUTPUT SPECIFICATIONS:

OUTPUT VOLTAGE	-54Vdc (typical)
OUTPUT CURRENT	37A (max, continuous)
ADJUSTMENT RANGE	-43Vdc ~ -58Vdc
MINIMUM LOAD	0A
LINE REGULATION	$\pm 5\%$ max, across full input range
LOAD REGULATION	$\pm 5\%$ max, across full load range
RIPPLE	$\leq 250mVp-p$; $< 20mV$ rms (20MHz BW)
SETPOINT ACCURACY	$\pm 1\%$
EXCURSION	$\pm 3\%$ (10-100% Step Load)
RECOVERY	100ms max
OVER CURRENT	105% ~ 120% (Auto-Recovery)
OVER VOLTAGE PROTECTION	59Vdc ($\pm 1V$; recycle input to reset)
LOAD CAPACITANCE	10,000uF (max)

SAFETY STANDARDS:

UL / cUL	UL/CSA 60950-1, 2nd edition dated 2014-10-14
CE MARK	Low Voltage Directive

GENERAL SPECIFICATIONS:

OPERATING TEMPERATURE	-40°C to +70°C ($> 51^\circ C$, see Derating Curve)
OPERATING HUMIDITY	5% - 90% (non-condensing)
STORAGE	-55°C to +85°C; 5% to 95% (non-condensing)
COOLING	2 Internal Intelligent Fans
VIBRATION	10-55Hz, 2G, 3Min Period, / 60 min each (3 axes)
SHOCK	20G Peak Acceleration
RELIABILITY	MTBF: 232,495 hours @ 50°C (per Mil STD 217F)
SIZE (W x L x H)	109mm x 340mm x 43.6mm (4.29in x 13.39in x 1.72in)
WEIGHT	1.82 kg (4.0 lbs)

EMISSIONS:

EMISSIONS	EN55022 Level A (Conducted)
ELECTROSTATIC DISCHARGE	EN61000-4-2, 4KV Contact / 8KV Air
RADIATED SUSCEPTIBILITY	EN61000-4-3, 26MHz-2000MHz, 10V/m, 80%AM
EFT / BURSTS	EN61000-4-4, 2KV
CONDUCTED IMMUNITY	EN61000-4-6, 150KHz-80MHz, 10Vrms, 80%AM
VOLTAGE DIPS	EN61000-4-10, 90% Dip & 10ms
VOLTAGE INTERRUPTIONS	EN61000-4-11, 95% reduction, 5ms
FLUCTUATIONS & FLICKER	EN61000-3-3

STATUS & CONTROL SPECIFICATIONS:

FRONT PANEL LEDs	Green=OK; Red=Major Alarm; Blinking Red (or Red/Green)=AC Input Voltage error; Blinking Green=Communication Loss w/CWC module
COMMUNICATION	RS-485 to host controller SNMPv1 network interface via RJ45 jack



