

Application.

VPRS-4200E

-54.5V/250A Power Cabinet



HIGHLIGHTS

- **Modular design for accommodating high power applications and easy maintenance**
- **Hot pluggable**
- **N+2 Redundancy**
- **Low voltage disconnect for the battery protection**
- **External battery connection for providing extended DC power backup**
- **The system can be controlled, measured and reported by Ethernet(SNMP)**
- **Safety Certifications Pending, for Full Product Family**

GENERAL SPECIFICATIONS

INPUT

- Voltage.....1Ø3W 220VAC(90VAC ~ 290VAC)
- Range..... 90 VAC ~ 290 VAC
- Frequency..... 45Hz ~ 65Hz
- Power Factor..... ≥ Typically 98%
- Efficiency ≥ Typically 90%

OUTPUT

- Voltage..... Default -54.5VDC
- Range.....-40VDC ~ -60VDC
- Current.....50A /module, 250Amax.(5module)
- Ripple & Noise ≤ 100mVp-p(0Hz~10MHz)

PROTECTION

- Input Under · Over Voltage
- Output High Voltage
- Output Current Limit
- Output Short Circuit
- Thermal Shutdown
- Battery Thermal Compensation
- Low Voltage Disconnect

PHYSICAL DIMENSINS(W×D×H)

- Module(mm)..... 85 ×405.5 ×122.5
- Shelf(mm).....482.6 ×450 ×265.9

ENVIRONMENT

OPERATION

- Temperature.....-10°C ~ +55 °C
- Relative Humidity.....10% ~ 95%

NON-OPERATION

- Ambient Temperature.....-40°C ~ +80 °C
- Relative Humidity.....5% ~ 95%(condensing)

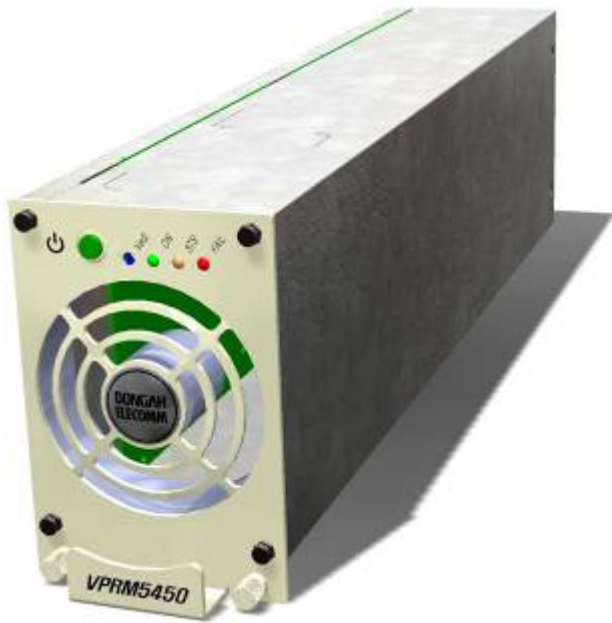
AGENCY COMPLIANCES

- Standard – FCC Part15 Subpart B, Class A
- Lightning Surge : ANSI/IEEE C62.41
- Electrostatic Discharge (ESD) : EN61000-4-2

-54.5V/50A Power Module

SYSTEM APPLIED PRODUCTS

VPRM5450



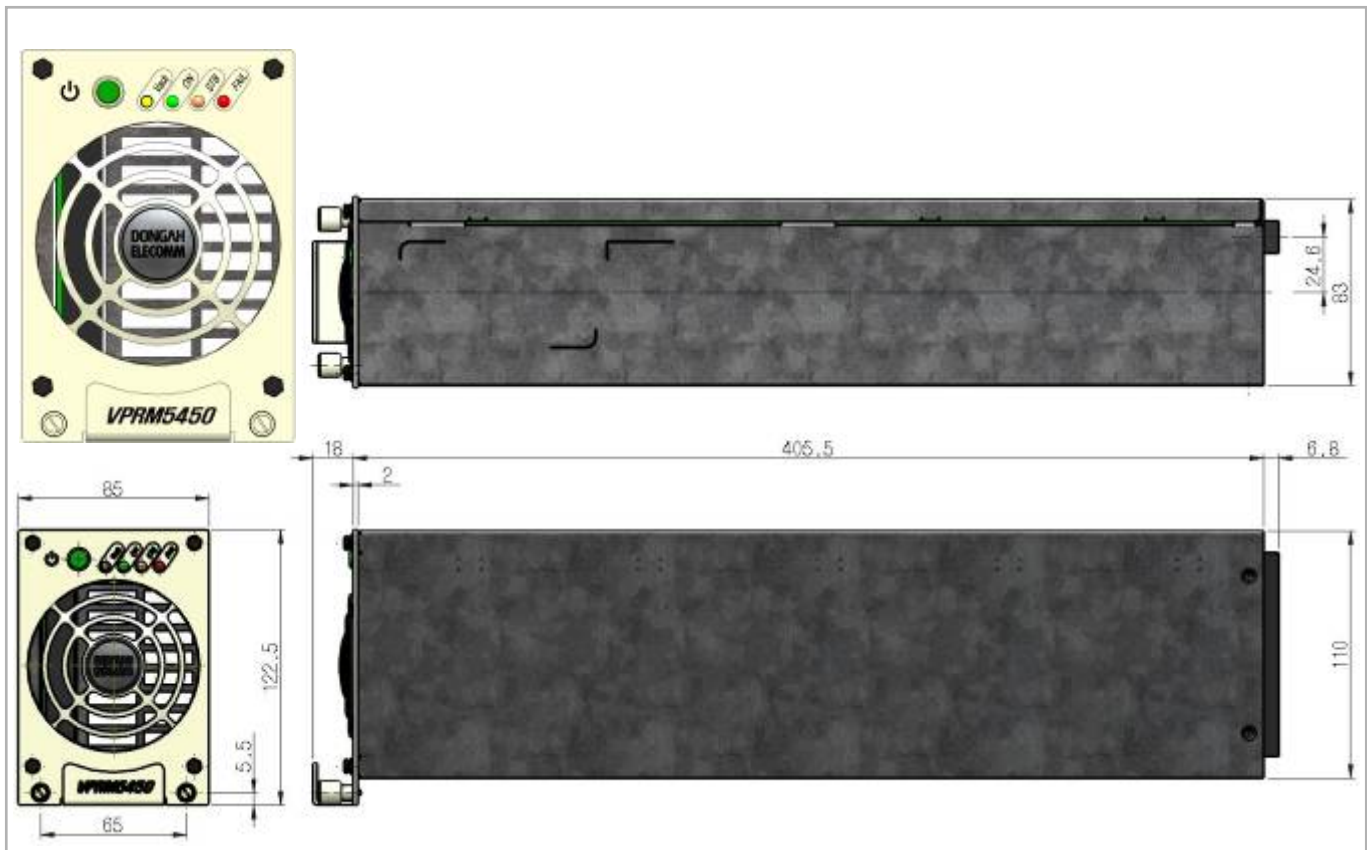
INPUT

- Voltage.....1Ø220VAC
- Frequency.....50/60Hz
- Power Factor..... ≥ Typically 98%
- Efficiency ≥ Typically 90%

OUTPUT

- Voltage..... Default -54.5VDC
- Current.....50Amax.
- Load/Line regulation ≤ ± 0.5%

DIMENSION



SYSTEM APPLIED PRODUCTS

VPRS-4200E Rectifier Shelf



DIMENSION

