

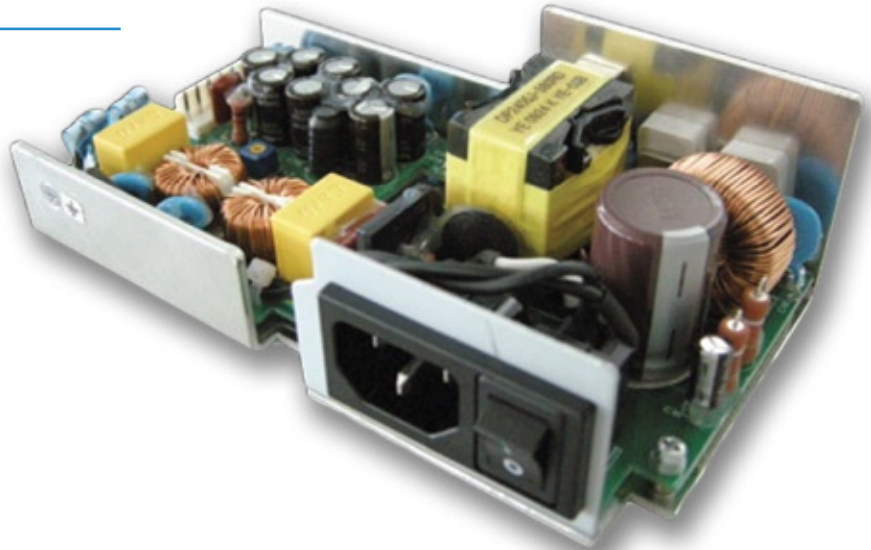


REV: 08162011

ITE / EMBEDDED POWER SUPPLY

## PRODUCT FEATURES:

- **Universal AC Input**
- **Custom Package Measuring 6.00" x 3.23" x 1.89"**
- **Integral Power Entry Module with Switch**
- **Convection Cooling (No Fans)**
- **Meets FCC & EN Class B EMI**
- **Worldwide Safety Approval**



## INPUT SPECIFICATIONS:

VOLTAGE	Universal Input (90 to 264VAC)
FREQUENCY	47-63Hz
INRUSH	25A @ 230 VAC Input Range (Max Cold Start)
CURRENT	2.5A @ 230VAC (Max Continuous)
PROTECTION	Single 5A Fuse / 250VAC
LEAKAGE	600uA Max @ 264VAC
HOLD-UP	10ms @ (230VAC & Full Load)
EFFICIENCY	≥ 80% @ 230VAC
HARMONICS	EN61000-3-2 Class D Compliant (>98% PF)

## OUTPUT SPECIFICATIONS:

OUTPUT	24VDC / 5 Amps
ADJUSTMENT RANGE	±5% (Minimum)
LINE REGULATION	±.5% Max over entire input range
LOAD REGULATION	±.5% maximum
RIPPLE	±1% (20MHz) BW
SETPOINT ACCURACY	±.5%
EXCURSION	±5% Max for 25% Step Load
RECOVERY	100ms max
OVER CURRENT	110-150% (Auto-Recovery)
OVER VOLTAGE PROTECTION	120-140% (recycle input to reset)

## SAFETY STANDARDS:

UL / CUL 60950-1	E166582
CE MARK	Low Voltage Directive

## GENERAL SPECIFICATIONS:

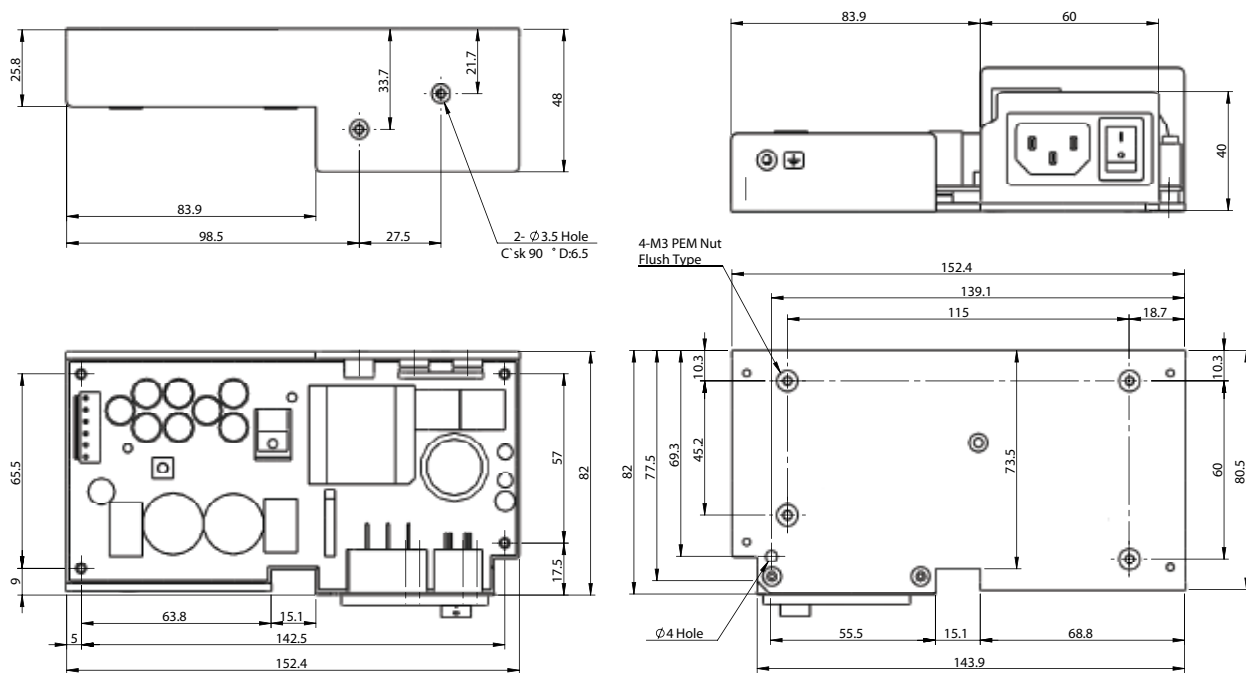
OPERATING TEMPERATURE	-20 ~ +70°C (Derate 2.5% per °C above 50°C)
STORAGE TEMPERATURE	-40 ~ +85°C
COOLING	Convection
HUMIDITY	5-95% (non-condensing)
VIBRATION	10-55Hz, 2G, 3Min Period, / 60 min each (3 axes)
SHOCK	20G Peak Acceleration
RELIABILITY	>100,000 MTBF at 100% load
SIZE (INCHES)	6.0" x 3.23" x 1.89"

## EMISSIONS:

EMISSIONS	EN55022 Level B (Conducted)
ELECTROSTATIC DISCHARGE	EN61000-4-2, 4kV Contact / 8kV Air
RADIATED SUSCEPTIBILITY	EN61000-4-3, 26-1000MHz, 10V/M, 80%AM
EFT / BURSTS	EN61000-4-4, 2kV
SURGES	EN61000-4-5, 2kV Earth, 1kV Line-Line
CONDUCTED IMMUNITY	EN61000-4-6, 0.15-800MHz, 10V 80%
VOLTAGE DIPS	EN61000-4-10, 95% Dip & 10ms, 30% Dip & 500ms
VOLTAGE INTERRUPTIONS	EN61000-4-11, 95% reduction, 5ms
FLUCTUATIONS & FLICKER	EN61000-3-3



## OUTLINE DRAWING:



Output Mating connector(Housing) :  
YH396-06V (Yeonho Electronics) or equivalent

Pin:	Function
1,2,3	+24V
4,5,6	Return

The input connector is an IEC Inlet Connector:  
Solteam P/N SC10-1BPP-2C1A