



REV: 09072011

ITE / EMBEDDED POWER SUPPLY

PRODUCT FEATURES:

- AC Input 100V ~ 277VAC for Lighting Applications
- Active PFC for EN61000-3-2 Class D Compliance
- Free Air Convection Cooling
- DC Outputs: 12V or 30V (Constant Current or Constant Voltage)
- Short Circuit Protection
- IP67-Rated Metal Case for Indoor/Outdoor Use
- UL 8750, 935, 1310 (Class 2)
- Suitable for LED/Lighting and Sign Applications



INPUT SPECIFICATIONS:

VOLTAGE	Universal AC Input (100 ~ 277VAC)
FREQUENCY	47~63 Hz
INRUSH	30A @ 230VAC Full Load (Max Cold Start)
CURRENT	1A @ 115VAC (Max Continuous)
PROTECTION	Single 2.0A Fuse / 300VAC
LEAKAGE	<0.5mA @ 264VAC
HOLD-UP	≥16ms @ (230 VAC, Full Load)
EFFICIENCY	75% (typical @ 230VAC, Full Load)
HARMONICS	EN61000-3-2 Class D Compliant (>95 PF)

OUTPUT SPECIFICATIONS:

OUTPUT	See Table for Standard Output Voltages/Currents
MINIMUM LOAD	None
LINE REGULATION	±1% Max over entire input range
LOAD REGULATION	±3% Maximum
RIPPLE	±3% (BW = 20 MHz)
SETPOINT ACCURACY	±1%
EXCURSION	±5% Max for 25% Step Load
RECOVERY	100ms max
OVER-CURRENT	105~150% (Auto-Recovery)
OVER VOLTAGE PROTECTION	110~150% (Hiccup Mode)

GENERAL SPECIFICATIONS:

OPERATING TEMPERATURE	-20°C to +50°C
STORAGE TEMPERATURE	-40°C to +85°C
COOLING	Convection Cooled
HUMIDITY	5% - 95% (non-condensing)
VIBRATION	10-55Hz, 2G, 3Min Period, 60 min each (3 axes)
SHOCK	20G Peak Acceleration
RELIABILITY	>100K Hours (Per Mil STD 217F)
SIZE METAL	7.36" x 2.28" x 1.57" (L x W x H)

EMISSIONS:

EMISSIONS	EN55022 Level B-Conducted
ELECTROSTATIC DISCHARGE	EN61000-4-2, 4KV Contact / 8KV Air
RADIATED SUSCEPTIBILITY	EN61000-4-3, 26MHz-1000MHz, 10V/m, 80%AM
EFT / BURSTS	EN61000-4-4, 2KV
SURGES	EN61000-4-5, 2KV Earth, 1KV Line-Line
CONDUCTED IMMUNITY	EN61000-4-6, 0.15KHz-800MHz, 10V, 80%AM
VOLTAGE DIPS	EN61000-4-10, 95% Dip & 10ms, 30% Dip & 500ms
VOLTAGE INTERRUPTIONS	EN61000-4-11, 95% reduction, 5ms
FLUCTUATIONS & FLICKER	EN61000-3-3

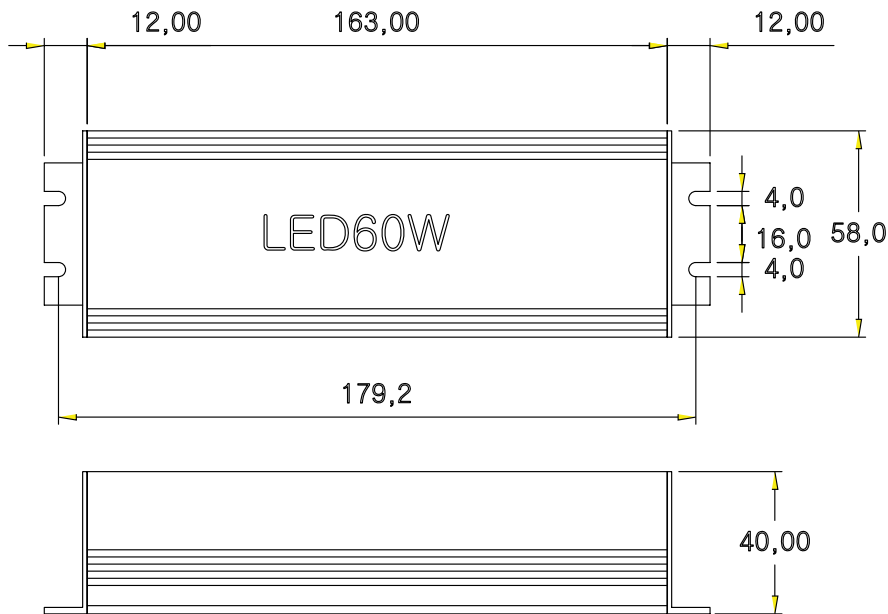
SAFETY STANDARDS:

cULus	60950-1, 8750 1 st , 1310 5 th (Class 2), CAN/CSA C22.2
CE MARK	Low Voltage Directive
CE	EN 61347-2-13:2006 with EN 61347-1:2008

STANDARD OUTPUT VOLTAGES/CURRENTS:

Series:	VDC	A (Min)	A (Max)	Option	Safety Certifications
LED-60-12VM	12V	0.0A	5.0A	Constant Voltage	Complete
LED-60-12CM	12V	---	5.0A	Constant Current	Complete
LED-60-30VM	30V	0.0A	2.0A	Constant Voltage	Complete
LED-60-30CM	30V	---	2.0A	Constant Current	Complete

OUTLINE DRAWING:

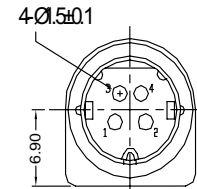


Standard Connections:

- Input: 500mm 3-Wire Tinned Leads, 18AWG
 - AC-L = RED
 - AC-N = BLACK
 - FG = Green
- Output: 500mm 2-Wire Tinned Leads, 20 AWG
 - DC+ = RED
 - DC- = BLACK

Optional Fixed Connections:

- Input: 1800mm to USA 3-Prong Plug
- Output: 500mm to Kycon KPPX-4P



Pins 1,2: Vout(+)
Pins 3,4: GND

