

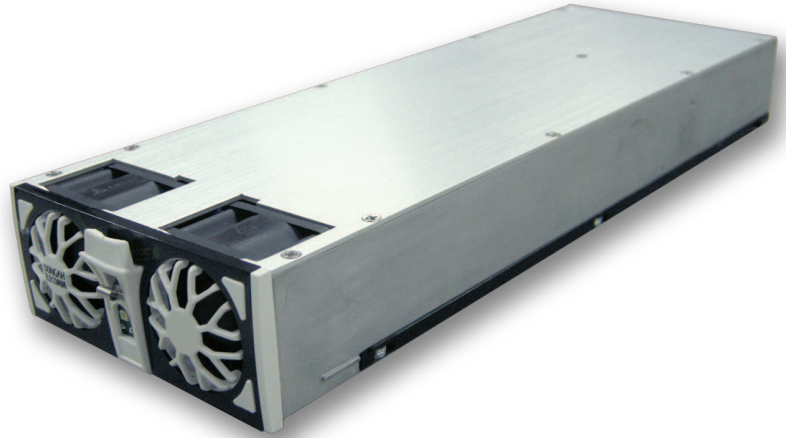
REV: 051816



RoHS 2 Compliant

PRODUCT FEATURES:

- 1RU Height, 2000 Watt Rectifier Module
- High Efficiency Operation (up to 92%)
- Universal AC Input
- Active PFC for EN61000-3-2 Class D Compliance
- Active Current-Sharing (within $\leq 2.5A$ module-to-module; 10% ~ 100% load)
- Hot-Swappable ($< 0.5\%$ Vout deviation)
- Full Featured Status and Alarms
- Front Panel LED Indicator
- RS-485 Serial Interface (via rear connector)
- International Safety Approvals
- RoHS 2 Compliant



INPUT SPECIFICATIONS:

VOLTAGE	85VAC to 264VAC (see Derating Curve for $< 180VAC$)
FREQUENCY	47-63Hz
INRUSH CURRENT	$\leq 15A$ max; $\leq 12.5A$ @ 240VAC (Cold Start)
OPERATING CURRENT	$\leq 11.3A$ @ 240VAC; 11.85A (max, continuous)
PROTECTION	Dual 15A Fuses / 250 V Rated
LEAKAGE	$\leq 3.5mA$ @ 264VACin
EFFICIENCY	92% typical
HARMONICS	EN61000-3-2 Class D Compliant (≥ 0.98 PF)

OUTPUT SPECIFICATIONS:

OUTPUT VOLTAGE	-54Vdc (typical)
OUTPUT CURRENT	37A (max, continuous)
ADJUSTMENT RANGE	-43Vdc ~ -58Vdc
MINIMUM LOAD	0A
LINE REGULATION	$\pm 5\%$ max, across full input range
LOAD REGULATION	$\pm 5\%$ max, across full load range
RIPPLE	$\leq 250mVp-p$; $< 20mV$ rms (20MHz BW)
SETPOINT ACCURACY	$\pm 1\%$
EXCURSION	$\pm 3\%$ (10-100% Step Load)
RECOVERY	100ms max
OVER CURRENT	105% ~ 120% (Auto-Recovery)
OVER VOLTAGE PROTECTION	59Vdc ($\pm 1V$; recycle input to reset)
LOAD CAPACITANCE	10,000uF (max)

SAFETY STANDARDS:

UL / cUL	UL/CSA 60950-1, 2nd edition dated 2014-10-14
CE MARK	Low Voltage Directive

GENERAL SPECIFICATIONS:

OPERATING TEMPERATURE	-40°C to +70°C ($> 51^\circ C$, see Derating Curve)
OPERATING HUMIDITY	5% - 90% (non-condensing)
STORAGE	-55°C to +85°C; 5% to 95% (non-condensing)
COOLING	2 Internal Intelligent Fans
VIBRATION	10-55Hz, 2G, 3Min Period, / 60 min each (3 axes)
SHOCK	20G Peak Acceleration
RELIABILITY	MTBF: 232,495 hours @ 50°C (per Mil STD 217F)
SIZE (W x L x H)	109mm x 340mm x 43.6mm (4.29in x 13.39in x 1.72in)
WEIGHT	1.82 kg (4.0 lbs)

EMISSIONS:

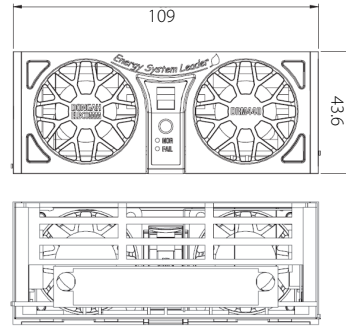
EMISSIONS	EN55022 Level A (Conducted)
ELECTROSTATIC DISCHARGE	EN61000-4-2, 4KV Contact / 8KV Air
RADIATED SUSCEPTIBILITY	EN61000-4-3, 26MHz-2000MHz, 10V/m, 80%AM
EFT / BURSTS	EN61000-4-4, 2KV
CONDUCTED IMMUNITY	EN61000-4-6, 150KHz-80MHz, 10Vrms, 80%AM
VOLTAGE DIPS	EN61000-4-10, 90% Dip & 10ms
VOLTAGE INTERRUPTIONS	EN61000-4-11, 95% reduction, 5ms
FLUCTUATIONS & FLICKER	EN61000-3-3

STATUS & CONTROL SPECIFICATIONS:

FRONT PANEL LEDs	Green=OK; Red=Major Alarm; Blinking Red (or Red/Green)=AC Input Voltage error; Blinking Green=Communication Loss w/CWC module
COMMUNICATION	RS-485 to host controller SNMPv1 network interface via RJ45 jack

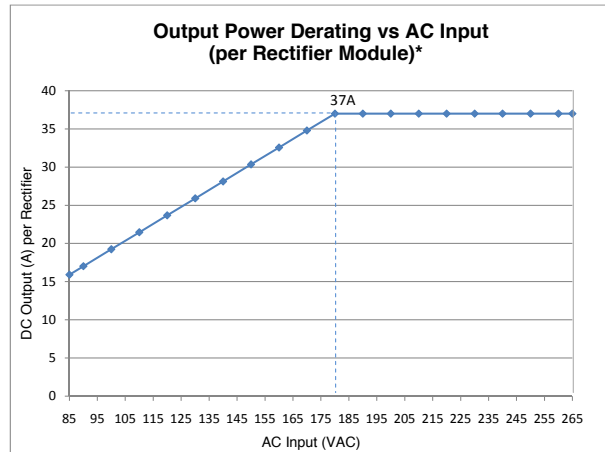
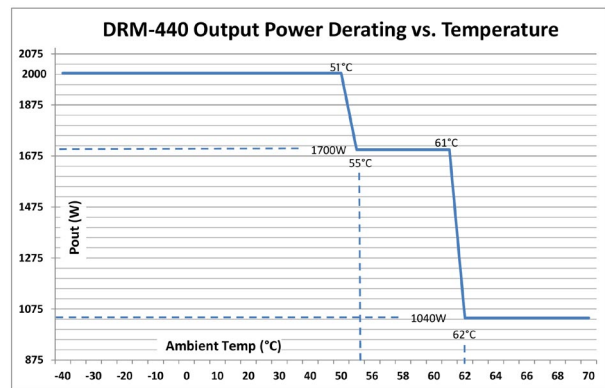


OUTLINE DRAWING:



Note: Rectifier Module may derate slightly different depending on shelf application; see specific Shelf datasheet for details.

DERATING CURVES:



* DC Output Current derates 0.6%/VAC linearly from 180VAC, down to 85VAC (at 85VACin, each rectifier delivers 15.91A)

ORDERING INFORMATION:

Contact your DongAh Elecomm USA sales representative for pricing and availability.
Contact DongAh USA at **(888) 878-7331** or email to sales@dongahusa.com for all areas not covered.

Product Code	Manufacturing Part Number (MPN)	Input Voltage	Output(s)	Safety Certifications
DRM-440 Rectifier Module	2010263071	85~264VAC	-54VDC	UL/CSA 60950-1, edition 2 dated 2014-10-14

DongAh Elecomm reserves the right to edit any information contained herein without prior notification and assumes no liability under any condition.
DongAh Elecomm solely retains any and all patent rights. Patent rights and privileges are separate from the sale or distribution of any products or information.

