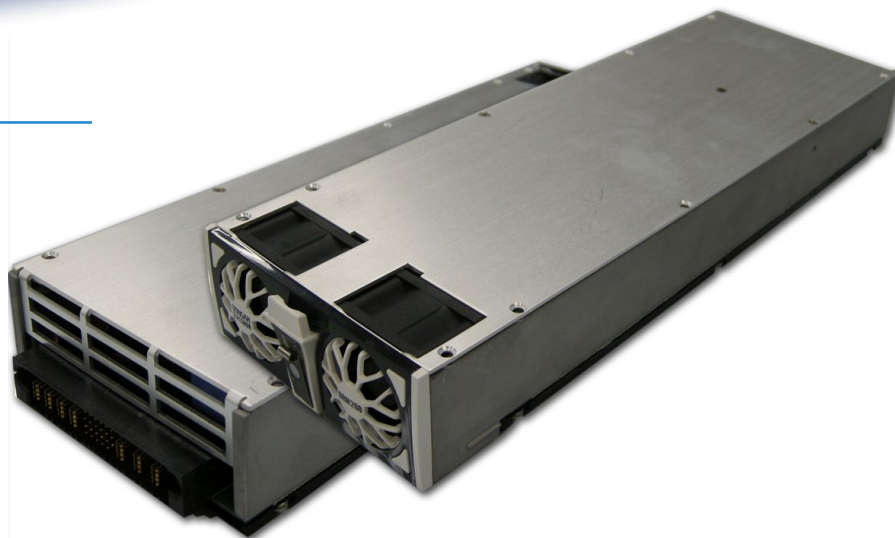


REV: 11202014

PRODUCT FEATURES:

- 1RU Height, 1500 Watt Rectifier Module
- High Efficiency Operation (up to 91%)
- Universal AC Input
- Active PFC for EN61000-3-2 Class D Compliance
- Active Current-Sharing; Hot-swappable
- Full Featured Status and Alarms
- Front Panel LED Indicator
- RS-485 Serial Interface (via rear connector)
- International Safety Approval (pending)



INPUT SPECIFICATIONS:

VOLTAGE	Universal AC Input (85 ~ 264VAC) See AC Input De-Rating Chart
FREQUENCY	47Hz ~ 63Hz
INRUSH	< 50A @230VAC Full Load (Max Cold Start)
CURRENT	10A @ 230VAC (Max Continuous)
PROTECTION	Double Pole 15A Fuse / 250V Rated
LEAKAGE	< 3.5mA @ 264VAC Max per Module
INPUT PROTECTION	Input Undervoltage/Overvoltage lockout
EFFICIENCY	Typical 91% @ 230VAC Full Load (27 Vout)
HARMONICS	EN61000-3-2 Class D Compliant (>0.98PF)

OUTPUT SPECIFICATIONS:

OUTPUT VOLTAGE	27V DC \pm 0.05V
OUTPUT CURRENT	56 Amps
OUTPUT ADJUSTMENT	21VDC ~ 28VDC
LINE REGULATION	0.50%
LOAD REGULATION	0.50%
RIPPLE	1%p-p, max (20MHz BW)
SETPPOINT ACCURACY	0.50%
EXCURSION	\pm 3%, max 50% Step Load
OVER-CURRENT	105% ~ 130% auto restart
OV PROTECTION	29VDC recycle Input to restart
OTP PROTECTION	Shutdown @ +75°C (\pm 5°C)

STATUS & CONTROL SPECIFICATIONS:

CONTROL SIGNALS	All referenced to Output GND terminals
DC_OK	High indicate output on and within regulation
INTERFACE	RS-485
ACTIVE CURRENT SHARING	\leq 10% of nominal current

GENERAL SPECIFICATIONS:

OPERATING TEMPERATURE	-40°C to +65°C derate 3.3%/°C above 50°C
STORAGE TEMPERATURE	-40°C to +85°C
OPERATING HUMIDITY	10% ~ 95% (non-condensing)
STORAGE HUMIDITY	5% ~ 95% (non-condensing)
COOLING	Intelligent Fan Cooled Rectifier Modules
VIBRATION	10-55Hz, 2G, 3Min Period, 60 min each (3 axes)
SHOCK	20G Peak Acceleration
RELIABILITY	>150K Hours (per MIL STD 217F)
SIZE (INCHES)	4.29" x 13.18" x 1.69" (W x L x H)

EMISSIONS:

EMISSIONS	EN55022 Level B (Conducted)
ELECTROSTATIC DISCHARGE	EN61000-4-2, 4KV Contact/ 8KV Air
RADIATED SUSCEPTIBILITY	EN61000-4-3, 26MHz-2000MHZ, 10V/m, 80%AM
EFT/BURSTS	EN61000-4-4, 2KV
SURGES	EN61000-4-5, 2KV Earth, 1KV Line-Line
CONDUCTED IMMUNITY	EN61000-4-6, 150KHz-80MHz, 10Vrms, 80%AM
VOLTAGE DIPS	EN61000-4-10, 95% Dip, 10ms / 30% Dip, 500ms
VOLTAGE INTERRUPTIONS	EN61000-4-11, 95% reduction, 5ms
FLUCTUATIONS & FLICKER	EN61000-3-3

SAFETY STANDARDS:

UL / CUL	60950-1 (pending)
CE MARK	Low Voltage Directive (pending)
TELCORDIA	NEBS Compliant (Level-3) (pending)



