



REV: 09232011

ITE / EMBEDDED POWER SUPPLY

PRODUCT FEATURES:

- 19" Rack Mount Energy System
- Mates with the CIRM-450 Rectifier Module
- Rated for up to -54V / 300A
- Digital Control and Provisioning
- Dual AC Input for Redundancy
- Dual DC Output
- Front Panel AC & DC Circuit Breakers
- Front Panel LED & LCD Indicator
- Uses the CIRC Controller
- World Wide Safety Approvals



INPUT SPECIFICATIONS:

VOLTAGE	220 VAC ±10%
FREQUENCY	47-63Hz
INRUSH	20A @ 230VAC Full Load per Module
CURRENT	15 @ 230VAC (Max Continuous) per Module
PROTECTION	Single 25A Fuse / 250V Rated per Module
LEAKAGE	> .75mA @ 264VAC per Module
EFFICIENCY	91% Typical @ 230VAC Full Load (48Vout)
HARMONICS	EN61000-3-2 Class D Compliant (>0.98PF)

OUTPUT SPECIFICATIONS:

OUTPUT VOLTAGE	-52V DC
VOLTAGE ADJUST	-51V ~ 58V DC
OUTPUT CURRENT	300 Amps Max 15 Amps per Shelf
LINE REGULATION	±1% max, across full input range
LOAD REGULATION	±1% max, across full load range
RIPPLE	±1% p-p, max (20MHz BW)
SETPOINT ACCURACY	±.5%
EXCURSION	±2% max, 10 ~ 90 or 90 ~ 10 Step Load
RECOVERY	2ms max
OVER-CURRENT	102 ~ 108% (Auto-Recovery)
OV PROTECTION	57V ~ 58V DC (Recycle input to reset)

STATUS & CONTROL SPECIFICATIONS:

CONTROL SIGNALS	All referenced to Output GND terminals
NORMAL LED	Green when Input AC and Output DC Good
FAIL LED	Red when a failure occurs
10/100 LED	Green when Ethernet connected properly
LINK	Blinks Green when there is Ethernet traffic
COMMUNICATIONS	Serial & Ethernet – see users manual

GENERAL SPECIFICATIONS:

OPERATING TEMPERATURE	-20°C to +65°C
STORAGE TEMPERATURE	-40°C to +85°C
OPERATING HUMIDITY	10% ~ 95% (non-condensing)
STORAGE HUMIDITY	5% ~ 95% (non-condensing)
COOLING	Forced Air Fans per Module
VIBRATION	10-55Hz, 2G, 3Min Period, 60 min each (3 axes)
SHOCK	20G Peak Acceleration
RELIABILITY	>100K hours (per MIL STD 217F)
SIZE (INCHES)	19" x 19.75" x 10.46" (W x L x H)
WEIGHT	44kg (97lbs) Max

EMISSIONS:

EMISSIONS	EN55022 Level A (Conducted)
ELECTROSTATIC DISCHARGE	EN61000-4-2, 4KV Contact / 8KV Air
RADIATED SUSCEPTIBILITY	EN61000-4-3, 26MHz-2000MHz, 10V /m, 80%AM
EFT / BURSTS	EN61000-4-4, 2KV
SURGES	EN61000-4-5, 2KV Earth, 1KV Line-Line
CONDUCTED IMMUNITY	EN61000-4-6, 150KHz-80MHz, 10Vrms, 80%AM
VOLTAGE DIPS	EN61000-4-10, 95% Dip, 10ms / 30% Dip, 500ms
VOLTAGE INTERRUPTIONS	EN61000-4-11, 95% reduction, 5ms
FLUCTUATIONS & FLICKER	EN61000-3-3

SAFETY STANDARDS:

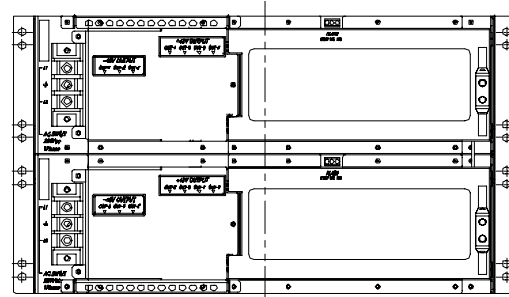
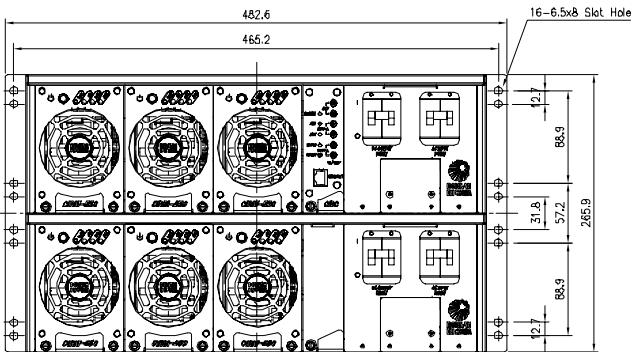
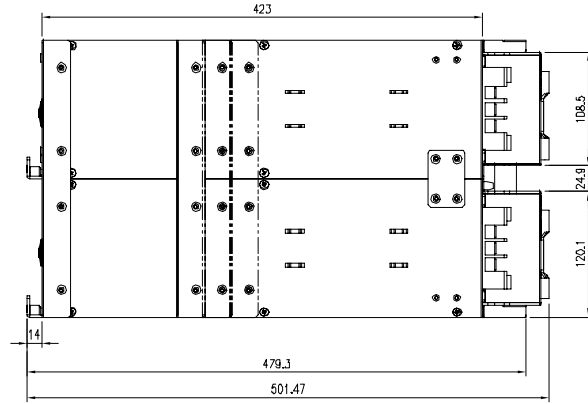
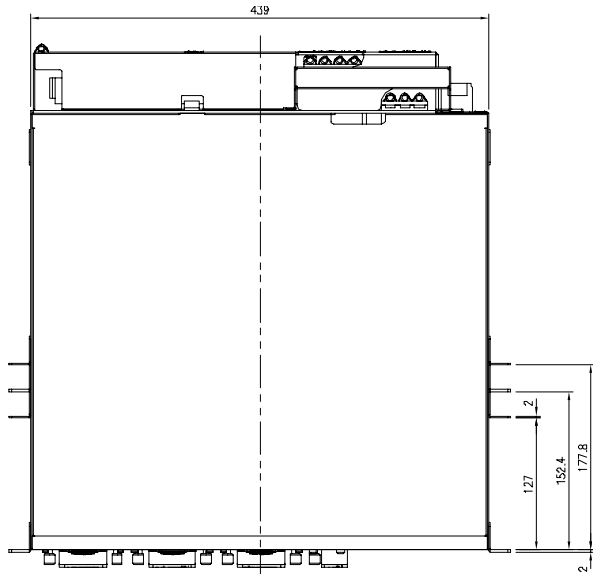
UL / cUL	60950-1
CE MARK	Low Voltage Directive



CIRS-4300 System

the **POWER**
you need

OUTLINE DRAWING:



ITE / EMBEDDED POWER SUPPLY



DONGAH ELECOMM
WWW.DONGAHUSA.COM

DongAh Elecomm USA
1300 E. Lookout Dr. #210,
Richardson TX 75082

Phone: (972) 497-9990
Fax: (972) 497-9991
sales@dongahusa.com

DongAh Elecomm Corp.
167 Namgok-ri, Yangji-myun,
Yongin-si Kyunggi-do 449-820 Korea

Phone: 82-31-330-8805
Fax: 82-31-330-8889
julian@dongahusa.com